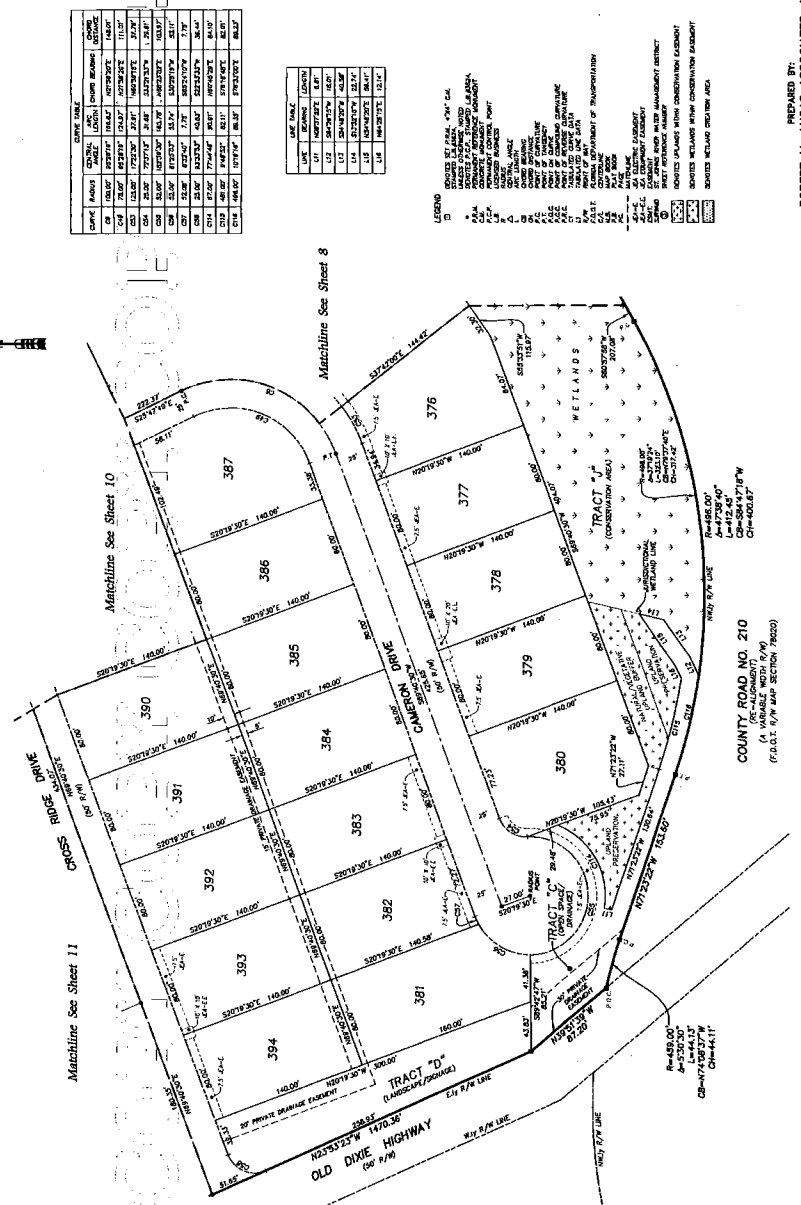
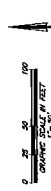


GREENLEAF VILLAGE AT NOCATEE PHASE 5
A PORTION OF SECTIONS 2 AND 3, TOWNSHIP 5 SOUTH, RANGE 28 EAST,
ST. JOHNS COUNTY, FLORIDA.



DATE	AMOUNT	REMARKS	BY
01/10/00	100.00	FOR 100.00 AC. OF LAND	...
02/15/00	200.00	FOR 200.00 AC. OF LAND	...
03/20/00	300.00	FOR 300.00 AC. OF LAND	...
04/25/00	400.00	FOR 400.00 AC. OF LAND	...
05/30/00	500.00	FOR 500.00 AC. OF LAND	...
06/01/00	600.00	FOR 600.00 AC. OF LAND	...
07/05/00	700.00	FOR 700.00 AC. OF LAND	...
08/10/00	800.00	FOR 800.00 AC. OF LAND	...
09/15/00	900.00	FOR 900.00 AC. OF LAND	...
10/20/00	1000.00	FOR 1000.00 AC. OF LAND	...
11/25/00	1100.00	FOR 1100.00 AC. OF LAND	...
12/30/00	1200.00	FOR 1200.00 AC. OF LAND	...
01/05/01	1300.00	FOR 1300.00 AC. OF LAND	...
02/10/01	1400.00	FOR 1400.00 AC. OF LAND	...
03/15/01	1500.00	FOR 1500.00 AC. OF LAND	...
04/20/01	1600.00	FOR 1600.00 AC. OF LAND	...
05/25/01	1700.00	FOR 1700.00 AC. OF LAND	...
06/30/01	1800.00	FOR 1800.00 AC. OF LAND	...
07/05/01	1900.00	FOR 1900.00 AC. OF LAND	...
08/10/01	2000.00	FOR 2000.00 AC. OF LAND	...
09/15/01	2100.00	FOR 2100.00 AC. OF LAND	...
10/20/01	2200.00	FOR 2200.00 AC. OF LAND	...
11/25/01	2300.00	FOR 2300.00 AC. OF LAND	...
12/30/01	2400.00	FOR 2400.00 AC. OF LAND	...
01/05/02	2500.00	FOR 2500.00 AC. OF LAND	...
02/10/02	2600.00	FOR 2600.00 AC. OF LAND	...
03/15/02	2700.00	FOR 2700.00 AC. OF LAND	...
04/20/02	2800.00	FOR 2800.00 AC. OF LAND	...
05/25/02	2900.00	FOR 2900.00 AC. OF LAND	...
06/30/02	3000.00	FOR 3000.00 AC. OF LAND	...
07/05/02	3100.00	FOR 3100.00 AC. OF LAND	...
08/10/02	3200.00	FOR 3200.00 AC. OF LAND	...
09/15/02	3300.00	FOR 3300.00 AC. OF LAND	...
10/20/02	3400.00	FOR 3400.00 AC. OF LAND	...
11/25/02	3500.00	FOR 3500.00 AC. OF LAND	...
12/30/02	3600.00	FOR 3600.00 AC. OF LAND	...
01/05/03	3700.00	FOR 3700.00 AC. OF LAND	...
02/10/03	3800.00	FOR 3800.00 AC. OF LAND	...
03/15/03	3900.00	FOR 3900.00 AC. OF LAND	...
04/20/03	4000.00	FOR 4000.00 AC. OF LAND	...
05/25/03	4100.00	FOR 4100.00 AC. OF LAND	...
06/30/03	4200.00	FOR 4200.00 AC. OF LAND	...
07/05/03	4300.00	FOR 4300.00 AC. OF LAND	...
08/10/03	4400.00	FOR 4400.00 AC. OF LAND	...
09/15/03	4500.00	FOR 4500.00 AC. OF LAND	...
10/20/03	4600.00	FOR 4600.00 AC. OF LAND	...
11/25/03	4700.00	FOR 4700.00 AC. OF LAND	...
12/30/03	4800.00	FOR 4800.00 AC. OF LAND	...
01/05/04	4900.00	FOR 4900.00 AC. OF LAND	...
02/10/04	5000.00	FOR 5000.00 AC. OF LAND	...
03/15/04	5100.00	FOR 5100.00 AC. OF LAND	...
04/20/04	5200.00	FOR 5200.00 AC. OF LAND	...
05/25/04	5300.00	FOR 5300.00 AC. OF LAND	...
06/30/04	5400.00	FOR 5400.00 AC. OF LAND	...
07/05/04	5500.00	FOR 5500.00 AC. OF LAND	...
08/10/04	5600.00	FOR 5600.00 AC. OF LAND	...
09/15/04	5700.00	FOR 5700.00 AC. OF LAND	...
10/20/04	5800.00	FOR 5800.00 AC. OF LAND	...
11/25/04	5900.00	FOR 5900.00 AC. OF LAND	...
12/30/04	6000.00	FOR 6000.00 AC. OF LAND	...
01/05/05	6100.00	FOR 6100.00 AC. OF LAND	...
02/10/05	6200.00	FOR 6200.00 AC. OF LAND	...
03/15/05	6300.00	FOR 6300.00 AC. OF LAND	...
04/20/05	6400.00	FOR 6400.00 AC. OF LAND	...
05/25/05	6500.00	FOR 6500.00 AC. OF LAND	...
06/30/05	6600.00	FOR 6600.00 AC. OF LAND	...
07/05/05	6700.00	FOR 6700.00 AC. OF LAND	...
08/10/05	6800.00	FOR 6800.00 AC. OF LAND	...
09/15/05	6900.00	FOR 6900.00 AC. OF LAND	...
10/20/05	7000.00	FOR 7000.00 AC. OF LAND	...
11/25/05	7100.00	FOR 7100.00 AC. OF LAND	...
12/30/05	7200.00	FOR 7200.00 AC. OF LAND	...
01/05/06	7300.00	FOR 7300.00 AC. OF LAND	...
02/10/06	7400.00	FOR 7400.00 AC. OF LAND	...
03/15/06	7500.00	FOR 7500.00 AC. OF LAND	...
04/20/06	7600.00	FOR 7600.00 AC. OF LAND	...
05/25/06	7700.00	FOR 7700.00 AC. OF LAND	...
06/30/06	7800.00	FOR 7800.00 AC. OF LAND	...
07/05/06	7900.00	FOR 7900.00 AC. OF LAND	...
08/10/06	8000.00	FOR 8000.00 AC. OF LAND	...
09/15/06	8100.00	FOR 8100.00 AC. OF LAND	...
10/20/06	8200.00	FOR 8200.00 AC. OF LAND	...
11/25/06	8300.00	FOR 8300.00 AC. OF LAND	...
12/30/06	8400.00	FOR 8400.00 AC. OF LAND	...
01/05/07	8500.00	FOR 8500.00 AC. OF LAND	...
02/10/07	8600.00	FOR 8600.00 AC. OF LAND	...
03/15/07	8700.00	FOR 8700.00 AC. OF LAND	...
04/20/07	8800.00	FOR 8800.00 AC. OF LAND	...
05/25/07	8900.00	FOR 8900.00 AC. OF LAND	...
06/30/07	9000.00	FOR 9000.00 AC. OF LAND	...
07/05/07	9100.00	FOR 9100.00 AC. OF LAND	...
08/10/07	9200.00	FOR 9200.00 AC. OF LAND	...
09/15/07	9300.00	FOR 9300.00 AC. OF LAND	...
10/20/07	9400.00	FOR 9400.00 AC. OF LAND	...
11/25/07	9500.00	FOR 9500.00 AC. OF LAND	...
12/30/07	9600.00	FOR 9600.00 AC. OF LAND	...
01/05/08	9700.00	FOR 9700.00 AC. OF LAND	...
02/10/08	9800.00	FOR 9800.00 AC. OF LAND	...
03/15/08	9900.00	FOR 9900.00 AC. OF LAND	...
04/20/08	10000.00	FOR 10000.00 AC. OF LAND	...

LINE	THICKNESS	LENGTH
1.1	1/8"	100.00'
1.2	1/4"	200.00'
1.3	3/8"	300.00'
1.4	1/2"	400.00'
1.5	5/8"	500.00'
1.6	3/4"	600.00'
1.7	7/8"	700.00'
1.8	1"	800.00'
1.9	1 1/8"	900.00'
2.0	1 1/4"	1000.00'

LEGEND

- 1.0 BOUNDARY OF P.L. 70-101, CH.
- 1.1 BOUNDARY OF P.L. 70-101, CH.
- 1.2 BOUNDARY OF P.L. 70-101, CH.
- 1.3 BOUNDARY OF P.L. 70-101, CH.
- 1.4 BOUNDARY OF P.L. 70-101, CH.
- 1.5 BOUNDARY OF P.L. 70-101, CH.
- 1.6 BOUNDARY OF P.L. 70-101, CH.
- 1.7 BOUNDARY OF P.L. 70-101, CH.
- 1.8 BOUNDARY OF P.L. 70-101, CH.
- 1.9 BOUNDARY OF P.L. 70-101, CH.
- 2.0 BOUNDARY OF P.L. 70-101, CH.
- 2.1 BOUNDARY OF P.L. 70-101, CH.
- 2.2 BOUNDARY OF P.L. 70-101, CH.
- 2.3 BOUNDARY OF P.L. 70-101, CH.
- 2.4 BOUNDARY OF P.L. 70-101, CH.
- 2.5 BOUNDARY OF P.L. 70-101, CH.
- 2.6 BOUNDARY OF P.L. 70-101, CH.
- 2.7 BOUNDARY OF P.L. 70-101, CH.
- 2.8 BOUNDARY OF P.L. 70-101, CH.
- 2.9 BOUNDARY OF P.L. 70-101, CH.
- 3.0 BOUNDARY OF P.L. 70-101, CH.
- 3.1 BOUNDARY OF P.L. 70-101, CH.
- 3.2 BOUNDARY OF P.L. 70-101, CH.
- 3.3 BOUNDARY OF P.L. 70-101, CH.
- 3.4 BOUNDARY OF P.L. 70-101, CH.
- 3.5 BOUNDARY OF P.L. 70-101, CH.
- 3.6 BOUNDARY OF P.L. 70-101, CH.
- 3.7 BOUNDARY OF P.L. 70-101, CH.
- 3.8 BOUNDARY OF P.L. 70-101, CH.
- 3.9 BOUNDARY OF P.L. 70-101, CH.
- 4.0 BOUNDARY OF P.L. 70-101, CH.
- 4.1 BOUNDARY OF P.L. 70-101, CH.
- 4.2 BOUNDARY OF P.L. 70-101, CH.
- 4.3 BOUNDARY OF P.L. 70-101, CH.
- 4.4 BOUNDARY OF P.L. 70-101, CH.
- 4.5 BOUNDARY OF P.L. 70-101, CH.
- 4.6 BOUNDARY OF P.L. 70-101, CH.
- 4.7 BOUNDARY OF P.L. 70-101, CH.
- 4.8 BOUNDARY OF P.L. 70-101, CH.
- 4.9 BOUNDARY OF P.L. 70-101, CH.
- 5.0 BOUNDARY OF P.L. 70-101, CH.
- 5.1 BOUNDARY OF P.L. 70-101, CH.
- 5.2 BOUNDARY OF P.L. 70-101, CH.
- 5.3 BOUNDARY OF P.L. 70-101, CH.
- 5.4 BOUNDARY OF P.L. 70-101, CH.
- 5.5 BOUNDARY OF P.L. 70-101, CH.
- 5.6 BOUNDARY OF P.L. 70-101, CH.
- 5.7 BOUNDARY OF P.L. 70-101, CH.
- 5.8 BOUNDARY OF P.L. 70-101, CH.
- 5.9 BOUNDARY OF P.L. 70-101, CH.
- 6.0 BOUNDARY OF P.L. 70-101, CH.
- 6.1 BOUNDARY OF P.L. 70-101, CH.
- 6.2 BOUNDARY OF P.L. 70-101, CH.
- 6.3 BOUNDARY OF P.L. 70-101, CH.
- 6.4 BOUNDARY OF P.L. 70-101, CH.
- 6.5 BOUNDARY OF P.L. 70-101, CH.
- 6.6 BOUNDARY OF P.L. 70-101, CH.
- 6.7 BOUNDARY OF P.L. 70-101, CH.
- 6.8 BOUNDARY OF P.L. 70-101, CH.
- 6.9 BOUNDARY OF P.L. 70-101, CH.
- 7.0 BOUNDARY OF P.L. 70-101, CH.
- 7.1 BOUNDARY OF P.L. 70-101, CH.
- 7.2 BOUNDARY OF P.L. 70-101, CH.
- 7.3 BOUNDARY OF P.L. 70-101, CH.
- 7.4 BOUNDARY OF P.L. 70-101, CH.
- 7.5 BOUNDARY OF P.L. 70-101, CH.
- 7.6 BOUNDARY OF P.L. 70-101, CH.
- 7.7 BOUNDARY OF P.L. 70-101, CH.
- 7.8 BOUNDARY OF P.L. 70-101, CH.
- 7.9 BOUNDARY OF P.L. 70-101, CH.
- 8.0 BOUNDARY OF P.L. 70-101, CH.
- 8.1 BOUNDARY OF P.L. 70-101, CH.
- 8.2 BOUNDARY OF P.L. 70-101, CH.
- 8.3 BOUNDARY OF P.L. 70-101, CH.
- 8.4 BOUNDARY OF P.L. 70-101, CH.
- 8.5 BOUNDARY OF P.L. 70-101, CH.
- 8.6 BOUNDARY OF P.L. 70-101, CH.
- 8.7 BOUNDARY OF P.L. 70-101, CH.
- 8.8 BOUNDARY OF P.L. 70-101, CH.
- 8.9 BOUNDARY OF P.L. 70-101, CH.
- 9.0 BOUNDARY OF P.L. 70-101, CH.
- 9.1 BOUNDARY OF P.L. 70-101, CH.
- 9.2 BOUNDARY OF P.L. 70-101, CH.
- 9.3 BOUNDARY OF P.L. 70-101, CH.
- 9.4 BOUNDARY OF P.L. 70-101, CH.
- 9.5 BOUNDARY OF P.L. 70-101, CH.
- 9.6 BOUNDARY OF P.L. 70-101, CH.
- 9.7 BOUNDARY OF P.L. 70-101, CH.
- 9.8 BOUNDARY OF P.L. 70-101, CH.
- 9.9 BOUNDARY OF P.L. 70-101, CH.
- 10.0 BOUNDARY OF P.L. 70-101, CH.

PREPARED BY:
ROBERT M. ANGAS ASSOCIATES, INC.
14775 OLD ST. AUGUSTINE ROAD
JACKSONVILLE, FL 32256 (904) 842-8850
CERTIFICATE OF PROFESSIONAL NO. LA 3684

COUNTY ROAD NO. 210
(RE-LOCATED)
C.S. 11/10/04 (SECTION 2)
P.O.D. 1/10/04 (SECTION 2003)

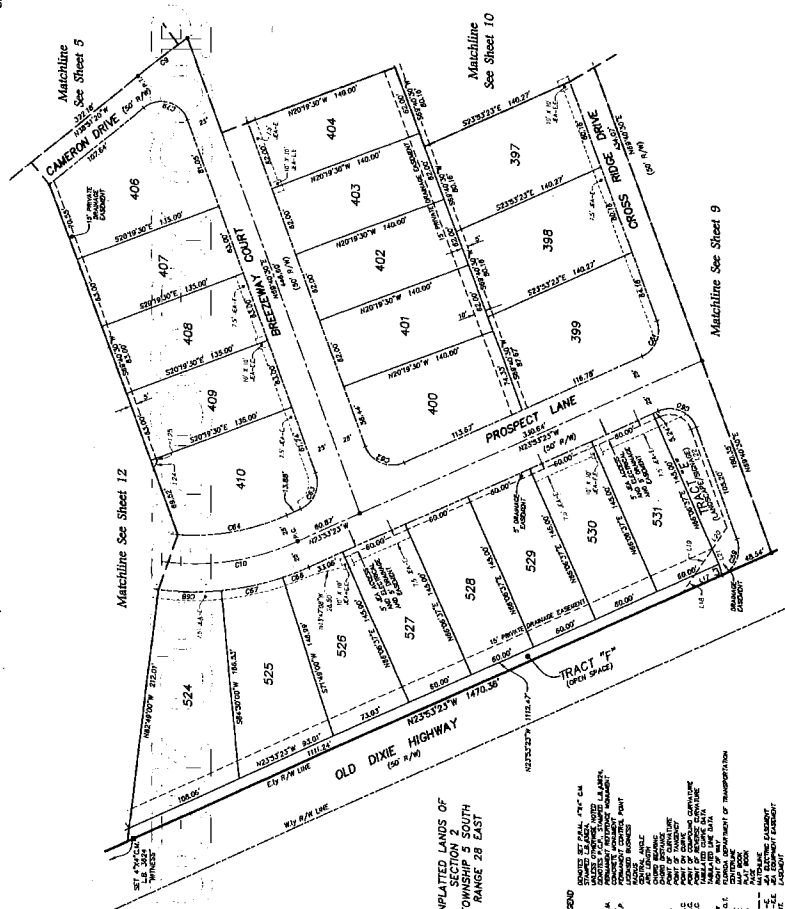
R=480.00'
L=172.50'
C=584.718'
CH=400.87'

GREENLEAF VILLAGE AT NOCATEE PHASE 5
A PORTION OF SECTIONS 2 AND 3, TOWNSHIP 5 SOUTH, RANGE 28 EAST,
ST. JOHNS COUNTY, FLORIDA.



TRACT	AREA (SQ. FT.)	AREA (AC.)	OWNER
1	10,000	0.23	...
2	10,000	0.23	...
3	10,000	0.23	...
4	10,000	0.23	...
5	10,000	0.23	...
6	10,000	0.23	...
7	10,000	0.23	...
8	10,000	0.23	...
9	10,000	0.23	...
10	10,000	0.23	...
11	10,000	0.23	...
12	10,000	0.23	...
13	10,000	0.23	...
14	10,000	0.23	...
15	10,000	0.23	...
16	10,000	0.23	...
17	10,000	0.23	...
18	10,000	0.23	...
19	10,000	0.23	...
20	10,000	0.23	...
21	10,000	0.23	...
22	10,000	0.23	...
23	10,000	0.23	...
24	10,000	0.23	...
25	10,000	0.23	...
26	10,000	0.23	...
27	10,000	0.23	...
28	10,000	0.23	...
29	10,000	0.23	...
30	10,000	0.23	...
31	10,000	0.23	...
32	10,000	0.23	...
33	10,000	0.23	...
34	10,000	0.23	...
35	10,000	0.23	...
36	10,000	0.23	...
37	10,000	0.23	...
38	10,000	0.23	...
39	10,000	0.23	...
40	10,000	0.23	...
41	10,000	0.23	...
42	10,000	0.23	...
43	10,000	0.23	...
44	10,000	0.23	...
45	10,000	0.23	...
46	10,000	0.23	...
47	10,000	0.23	...
48	10,000	0.23	...
49	10,000	0.23	...
50	10,000	0.23	...
51	10,000	0.23	...
52	10,000	0.23	...
53	10,000	0.23	...
54	10,000	0.23	...
55	10,000	0.23	...
56	10,000	0.23	...
57	10,000	0.23	...
58	10,000	0.23	...
59	10,000	0.23	...
60	10,000	0.23	...
61	10,000	0.23	...
62	10,000	0.23	...
63	10,000	0.23	...
64	10,000	0.23	...
65	10,000	0.23	...
66	10,000	0.23	...
67	10,000	0.23	...
68	10,000	0.23	...
69	10,000	0.23	...
70	10,000	0.23	...
71	10,000	0.23	...
72	10,000	0.23	...
73	10,000	0.23	...
74	10,000	0.23	...
75	10,000	0.23	...
76	10,000	0.23	...
77	10,000	0.23	...
78	10,000	0.23	...
79	10,000	0.23	...
80	10,000	0.23	...
81	10,000	0.23	...
82	10,000	0.23	...
83	10,000	0.23	...
84	10,000	0.23	...
85	10,000	0.23	...
86	10,000	0.23	...
87	10,000	0.23	...
88	10,000	0.23	...
89	10,000	0.23	...
90	10,000	0.23	...
91	10,000	0.23	...
92	10,000	0.23	...
93	10,000	0.23	...
94	10,000	0.23	...
95	10,000	0.23	...
96	10,000	0.23	...
97	10,000	0.23	...
98	10,000	0.23	...
99	10,000	0.23	...
100	10,000	0.23	...

LINE	TYPE	DESCRIPTION
1
2
3
4
5
6
7
8
9
10
11
12
13
14
15
16
17
18
19
20
21
22
23
24
25
26
27
28
29
30
31
32
33
34
35
36
37
38
39
40
41
42
43
44
45
46
47
48
49
50
51
52
53
54
55
56
57
58
59
60
61
62
63
64
65
66
67
68
69
70
71
72
73
74
75
76
77
78
79
80
81
82
83
84
85
86
87
88
89
90
91
92
93
94
95
96
97
98
99
100



UNPLATTED LANDS OF
SECTION 2
TOWNSHIP 5 SOUTH
RANGE 28 EAST

- LEGEND
- 10 BOUNDARY BY PAUL, PLY, CA
 - 11 UNPLATTED LANDS WITH CONSERVATION EASEMENT
 - 12 UNPLATTED LANDS WITH CONSERVATION EASEMENT
 - 13 UNPLATTED LANDS WITH CONSERVATION EASEMENT
 - 14 UNPLATTED LANDS WITH CONSERVATION EASEMENT
 - 15 UNPLATTED LANDS WITH CONSERVATION EASEMENT
 - 16 UNPLATTED LANDS WITH CONSERVATION EASEMENT
 - 17 UNPLATTED LANDS WITH CONSERVATION EASEMENT
 - 18 UNPLATTED LANDS WITH CONSERVATION EASEMENT
 - 19 UNPLATTED LANDS WITH CONSERVATION EASEMENT
 - 20 UNPLATTED LANDS WITH CONSERVATION EASEMENT
 - 21 UNPLATTED LANDS WITH CONSERVATION EASEMENT
 - 22 UNPLATTED LANDS WITH CONSERVATION EASEMENT
 - 23 UNPLATTED LANDS WITH CONSERVATION EASEMENT
 - 24 UNPLATTED LANDS WITH CONSERVATION EASEMENT
 - 25 UNPLATTED LANDS WITH CONSERVATION EASEMENT
 - 26 UNPLATTED LANDS WITH CONSERVATION EASEMENT
 - 27 UNPLATTED LANDS WITH CONSERVATION EASEMENT
 - 28 UNPLATTED LANDS WITH CONSERVATION EASEMENT
 - 29 UNPLATTED LANDS WITH CONSERVATION EASEMENT
 - 30 UNPLATTED LANDS WITH CONSERVATION EASEMENT
 - 31 UNPLATTED LANDS WITH CONSERVATION EASEMENT
 - 32 UNPLATTED LANDS WITH CONSERVATION EASEMENT
 - 33 UNPLATTED LANDS WITH CONSERVATION EASEMENT
 - 34 UNPLATTED LANDS WITH CONSERVATION EASEMENT
 - 35 UNPLATTED LANDS WITH CONSERVATION EASEMENT
 - 36 UNPLATTED LANDS WITH CONSERVATION EASEMENT
 - 37 UNPLATTED LANDS WITH CONSERVATION EASEMENT
 - 38 UNPLATTED LANDS WITH CONSERVATION EASEMENT
 - 39 UNPLATTED LANDS WITH CONSERVATION EASEMENT
 - 40 UNPLATTED LANDS WITH CONSERVATION EASEMENT
 - 41 UNPLATTED LANDS WITH CONSERVATION EASEMENT
 - 42 UNPLATTED LANDS WITH CONSERVATION EASEMENT
 - 43 UNPLATTED LANDS WITH CONSERVATION EASEMENT
 - 44 UNPLATTED LANDS WITH CONSERVATION EASEMENT
 - 45 UNPLATTED LANDS WITH CONSERVATION EASEMENT
 - 46 UNPLATTED LANDS WITH CONSERVATION EASEMENT
 - 47 UNPLATTED LANDS WITH CONSERVATION EASEMENT
 - 48 UNPLATTED LANDS WITH CONSERVATION EASEMENT
 - 49 UNPLATTED LANDS WITH CONSERVATION EASEMENT
 - 50 UNPLATTED LANDS WITH CONSERVATION EASEMENT
 - 51 UNPLATTED LANDS WITH CONSERVATION EASEMENT
 - 52 UNPLATTED LANDS WITH CONSERVATION EASEMENT
 - 53 UNPLATTED LANDS WITH CONSERVATION EASEMENT
 - 54 UNPLATTED LANDS WITH CONSERVATION EASEMENT
 - 55 UNPLATTED LANDS WITH CONSERVATION EASEMENT
 - 56 UNPLATTED LANDS WITH CONSERVATION EASEMENT
 - 57 UNPLATTED LANDS WITH CONSERVATION EASEMENT
 - 58 UNPLATTED LANDS WITH CONSERVATION EASEMENT
 - 59 UNPLATTED LANDS WITH CONSERVATION EASEMENT
 - 60 UNPLATTED LANDS WITH CONSERVATION EASEMENT
 - 61 UNPLATTED LANDS WITH CONSERVATION EASEMENT
 - 62 UNPLATTED LANDS WITH CONSERVATION EASEMENT
 - 63 UNPLATTED LANDS WITH CONSERVATION EASEMENT
 - 64 UNPLATTED LANDS WITH CONSERVATION EASEMENT
 - 65 UNPLATTED LANDS WITH CONSERVATION EASEMENT
 - 66 UNPLATTED LANDS WITH CONSERVATION EASEMENT
 - 67 UNPLATTED LANDS WITH CONSERVATION EASEMENT
 - 68 UNPLATTED LANDS WITH CONSERVATION EASEMENT
 - 69 UNPLATTED LANDS WITH CONSERVATION EASEMENT
 - 70 UNPLATTED LANDS WITH CONSERVATION EASEMENT
 - 71 UNPLATTED LANDS WITH CONSERVATION EASEMENT
 - 72 UNPLATTED LANDS WITH CONSERVATION EASEMENT
 - 73 UNPLATTED LANDS WITH CONSERVATION EASEMENT
 - 74 UNPLATTED LANDS WITH CONSERVATION EASEMENT
 - 75 UNPLATTED LANDS WITH CONSERVATION EASEMENT
 - 76 UNPLATTED LANDS WITH CONSERVATION EASEMENT
 - 77 UNPLATTED LANDS WITH CONSERVATION EASEMENT
 - 78 UNPLATTED LANDS WITH CONSERVATION EASEMENT
 - 79 UNPLATTED LANDS WITH CONSERVATION EASEMENT
 - 80 UNPLATTED LANDS WITH CONSERVATION EASEMENT
 - 81 UNPLATTED LANDS WITH CONSERVATION EASEMENT
 - 82 UNPLATTED LANDS WITH CONSERVATION EASEMENT
 - 83 UNPLATTED LANDS WITH CONSERVATION EASEMENT
 - 84 UNPLATTED LANDS WITH CONSERVATION EASEMENT
 - 85 UNPLATTED LANDS WITH CONSERVATION EASEMENT
 - 86 UNPLATTED LANDS WITH CONSERVATION EASEMENT
 - 87 UNPLATTED LANDS WITH CONSERVATION EASEMENT
 - 88 UNPLATTED LANDS WITH CONSERVATION EASEMENT
 - 89 UNPLATTED LANDS WITH CONSERVATION EASEMENT
 - 90 UNPLATTED LANDS WITH CONSERVATION EASEMENT
 - 91 UNPLATTED LANDS WITH CONSERVATION EASEMENT
 - 92 UNPLATTED LANDS WITH CONSERVATION EASEMENT
 - 93 UNPLATTED LANDS WITH CONSERVATION EASEMENT
 - 94 UNPLATTED LANDS WITH CONSERVATION EASEMENT
 - 95 UNPLATTED LANDS WITH CONSERVATION EASEMENT
 - 96 UNPLATTED LANDS WITH CONSERVATION EASEMENT
 - 97 UNPLATTED LANDS WITH CONSERVATION EASEMENT
 - 98 UNPLATTED LANDS WITH CONSERVATION EASEMENT
 - 99 UNPLATTED LANDS WITH CONSERVATION EASEMENT
 - 100 UNPLATTED LANDS WITH CONSERVATION EASEMENT

PREPARED BY:
ROBERT M. ANGAS ASSOCIATES, INC.
14775 OLD ST. AUGUSTINE ROAD
JACKSONVILLE, FL 32258 (904) 642-8850
CERTIFICATE OF PROFESSIONAL REG. NO. 1262

MAP BOOK 69 PAGE 89

SHEET 13 OF 15 SHEETS
SEE SHEET 2 FOR NOTES

GREENLEAF VILLAGE AT NOCATEE PHASE 5
A PORTION OF SECTIONS 2 AND 3, TOWNSHIP 5 SOUTH, RANGE 28 EAST,
ST. JOHNS COUNTY, FLORIDA.

